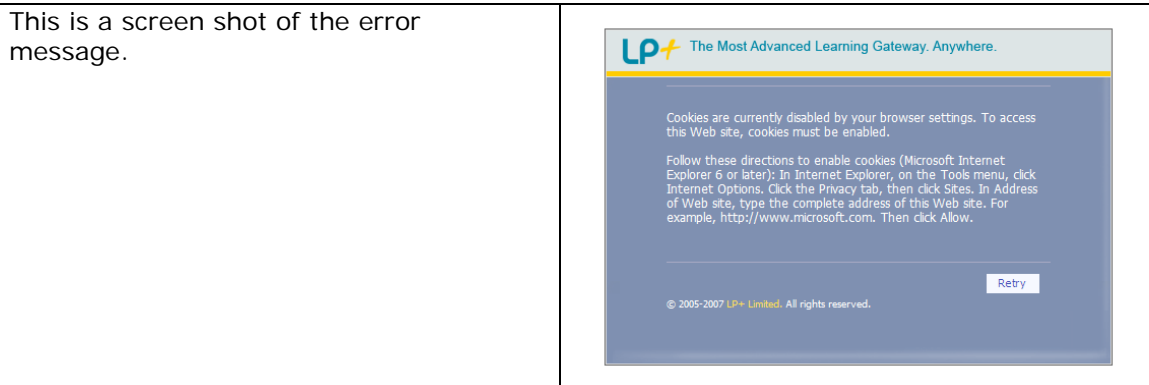


Cookies Sharepoint Home Access Bug 1.

This issue affects users using Microsoft Internet Explorer 6 and 7; it does not affect users using Mozilla/Firefox or Safari.

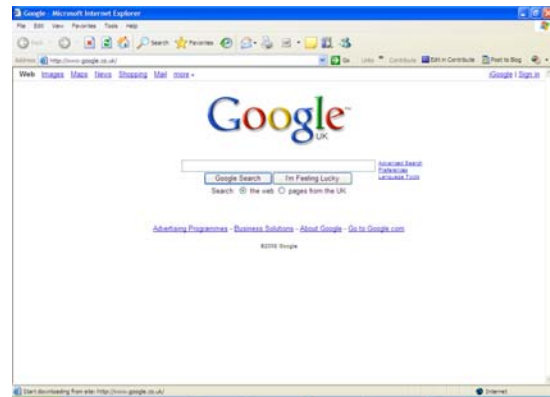


The Cookie that lets the Sharepoint login work in Explorer is restricted by its security. The issue effects users when they first visit the web address <http://www.tcsharepoint.com> and the long form <https://gateway01.lplusplus.net/school/ttc>.

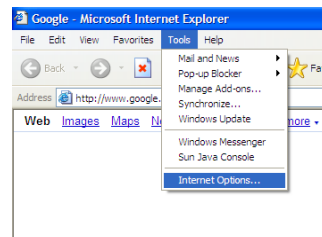
You can reduce the security but this will allow cookies form other sites. We do not advise that you do this.

Internet Explorer 6

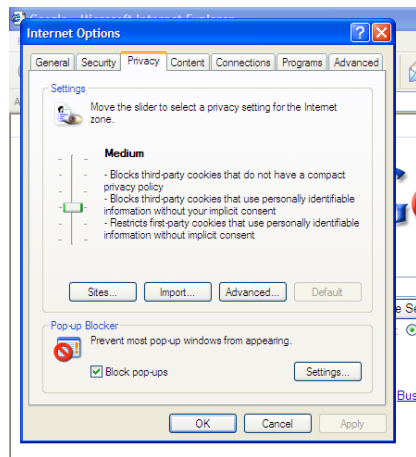
Open up Internet Explorer



Go to Tools, Internet Options.



Go to the Privacy Tab



Click on the Sites button.

Type in

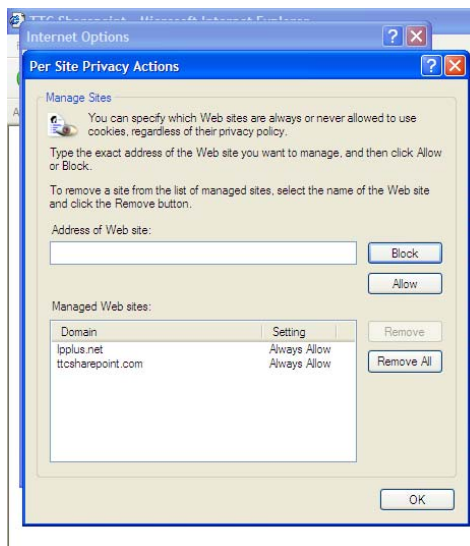
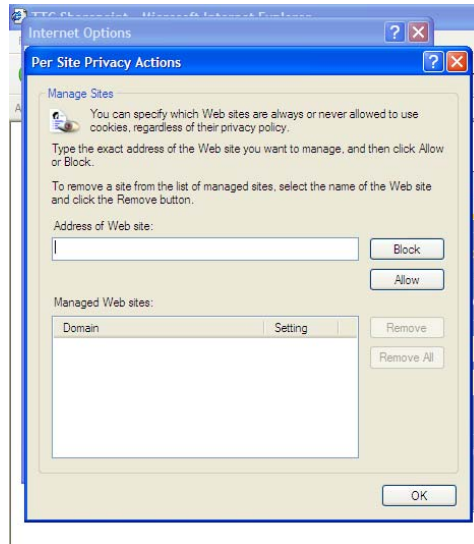
<http://www.ttsharepoint.com>

and click Allow, it should appear in the box below,

do the same for

<https://gateway01.lpplus.net>

and click allow and you should have the same screen shot as below.



Click OK and then OK again.

You will then have to click Retry or Restart Internet Explorer 6.

You should then get the correct log in screen.